



Justrite Safety Group

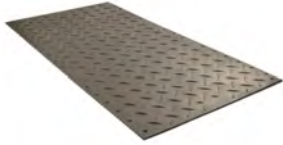
MINING, OIL & GAS

APPLICATIONS



GROUND PROTECTION

Whether you need to protect sensitive turf, or provide extra traction, Checkers™ ground protection solutions have you covered. Checkers™ mats can be connected together to form roadways or walkways, and with a wide variety of traction patterns, weights, and designs, they are applicable to nearly every industry.



ALTURNAMAT®

Model # AM48

- Bolt cleat design for great traction
- mats can be locked together with Turn-A-Links forming a continuous roadway
- Leave turf smooth, even in soft conditions
- **⚠ WARNING:** Below



TRAKMAT®

Model # TM4496

- Tough, flexible half-inch-thick sheet
- Trakmats® will bend but will not break
- UV protection prevents material degradation
- **⚠ WARNING:** Below



OUTRIGGER PADS

Model # PAD24241

- No splinters, warping, or delamination
- Lightweight & heavy duty
- Recovery memory after bending
- Engineered to bend but not break



⚠ WARNING: This product can expose you to chemicals including Lead, Carbon Black, Chromium, Nickel Compounds, and Sulfur Dioxide, which are known to the State of California to cause cancer and birth defects or other reproductive harm. For more information go to www.P65Warnings.ca.gov.

WHEEL CHOCKS

Checkers™ manufactures the world's most extensive line of wheel chocks. Checkers™ wheel chocks comply with the safety requirements for a variety of industries and ensure a safe working environment while your vehicles are at rest. Made with durable urethane, wheel chocks provide a safe chocking solution for any type of vehicle.



MINING CHOCKS

Model # MC3000

- Light weight with tough urethane construction
- Optional studs available for snow and ice
- Chocking protocols imprinted on back of chock



HEAVY-DUTY CHOCKS

Model # MC3011

- Durable, lightweight, and easy-to-use design
- Ideal for: Heavy Equipment, Haul Trucks, Cranes, Large Military Tactical Vehicles

⚠ WARNING: This product can expose you to chemicals including Carbon Black, which is known to the State of California to cause cancer and birth defects or other reproductive harm. For more information go to www.P65Warnings.ca.gov.

⚠ WARNING: This product can expose you to chemicals including Carbon Black, which is known to the State of California to cause cancer and birth defects or other reproductive harm. For more information go to www.P65Warnings.ca.gov.



ALL-TERRAIN CHOCKS

Model # AT3512

- Light weight with tough urethane construction
- Chocking instructions imprinted on back of chock
- Complies with SAE-J348, NFPA 1901, and NFPA 1906 Standards



GENERAL-PURPOSE CHOCKS

Model # UC1500

- UC Series - designed for a wide variety of commercial applications
- Lightweight urethane construction
- Ideal for Over-the-Road Trucks, Trailers, Pickups, Utility Vehicles

⚠ WARNING: This product can expose you to chemicals including Carbon Black, which is known to the State of California to cause cancer and birth defects or other reproductive harm. For more information go to www.P65Warnings.ca.gov.

⚠ WARNING: This product can expose you to chemicals including Acrylonitrile and Styrene, which are known to the State of California to cause cancer and birth defects or other reproductive harm. For more information go to www.P65Warnings.ca.gov.

MINING, OIL & GAS APPLICATIONS

WARNING WHIPS

Checkers™ warning whips are designed to increase the visibility of vehicles. Without a whip for extra visibility, large equipment operators can have difficulty seeing these smaller vehicles, potentially leading to accidents. Both lighted and non-lighted models are available, with many different mounting options.



LIGHTED WARNING WHIPS

Model # AP8.12OY.AF4

- Extensive lighting options, with a variety of flash pattern options
- Fiberglass resin construction withstands harsh environments
- Waterproof LED housing to improve longevity

⚠ WARNING: This product can expose you to chemicals including Nickel Compounds, which is known to the State of California to cause cancer and birth defects or other reproductive harm. For more information go to www.P65Warnings.ca.gov.



SUPER WHIPS HEAVY-DUTY LIGHTED WHIPS

Model # SW12

- Includes heavy-duty spring mount
- Day Bright™ florescent orange nylon mesh flag with yellow 3M® Scotchlite® reflective X

⚠ WARNING: This product can expose you to chemicals including Nickel Compounds, which is known to the State of California to cause cancer and birth defects or other reproductive harm. For more information go to www.P65Warnings.ca.gov.

CABLE & HOSE PROTECTION

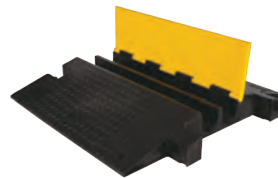
Checkers™ offers the most extensive line of high-performance cable protection products in the world. These durable systems protect valuable electrical cables, cords and hose lines from damage while providing a method of safe passage for pedestrian traffic, vehicles and heavy-duty equipment.



EXTREME CROSSOVER SYSTEM

Model # X039-3-2-L10

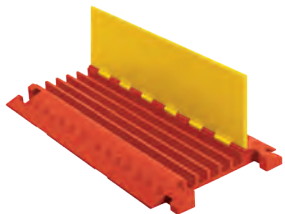
- Protects cables and hoses up to 5.5-in outside diameter
- Withstands over a million pounds of gross vehicle weight
- Impact and abrasion resistant
- **⚠ WARNING:** Below



YELLOW JACKET® EXTREME CROSSOVER

Model # YJ2-400

- Protects cables and hoses up to 3.75-in outside dia.
- Easily handles the load of a 400-ton haul truck
- **⚠ WARNING:** Below



LINEBACKER® SERIES

Model # CP5X125

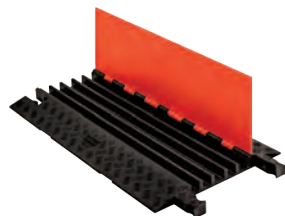
- Uses T-Connector
- Checkers' most robust cable protection option
- High load-bearing capacity
- Ideal for: Mining, Oil & Gas, Military, Industrial Applications
- **⚠ WARNING:** Below



DIAMONDBACK® HOSE BRIDGE

Model # UHB4045

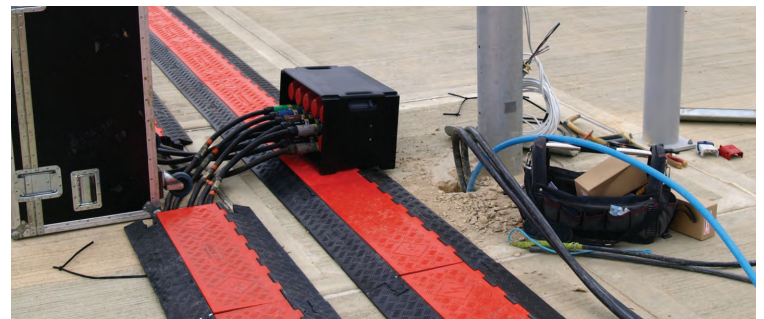
- Protects hoses up to 6.5 in.
- Reduces hose maintenance costs
- Ideal for: Mining, Refineries, Industrial, Firefighting Vehicles
- **⚠ WARNING:** Below



GUARD DOG® SERIES

Model # GD5X125

- Checkers' most versatile option
- For pedestrian traffic and over-the-road vehicles
- Ideal for: Utility, Industrial, Entertainment
- **⚠ WARNING:** Below



⚠ WARNING: This product can expose you to chemicals including Carbon Black, Titanium Dioxide, Formaldehyde, and Benzyl Butyl Phthalate, which are known to the State of California to cause cancer and birth defects or other reproductive harm. For more information go to www.P65Warnings.ca.gov.



CHECKERS™

620 Compton St
Broomfield, CO 80020

PHONE: (800) 438-9336

FAX: (720) 890-4858

EMAIL: sales@checkers-safety.com

www.checkers-safety.com

Ver. 5/19

A PRODUCT OF:



Justrite Safety Group is the leading source of safety equipment for flammables and hazardous materials storage and handling, asset protection, environmental protection spill containment, absorbents, specialized chemical storage, cable management, safety showers, eye/face washes, matting, and vehicle safety equipment. Learn more at Justrite.com, Checkers-safety.com, and Notrax.com.