



CHECKERS

Justrite Safety Group

RC450 RUBBER WHEEL CHOCK

PRODUCT INFORMATION BROCHURE





PICTURED: RC450 IN USE

Checkers™ wheel chocks comply with the safety requirements of a variety of industries and ensure a safe working environment while your vehicles are at rest. Offered in a variety of styles, our wheel chocks provide a safe chocking solution for any type of vehicle.

Checkers™ wheel chocks were engineered in collaboration with safety experts to work with a wide range of ground equipment, commercial, and military vehicles. Whether you are chocking a fully-loaded 400-ton haul truck or a utility trailer, we have the wheel chocks you need to safely secure your vehicle and meet compliance standards.

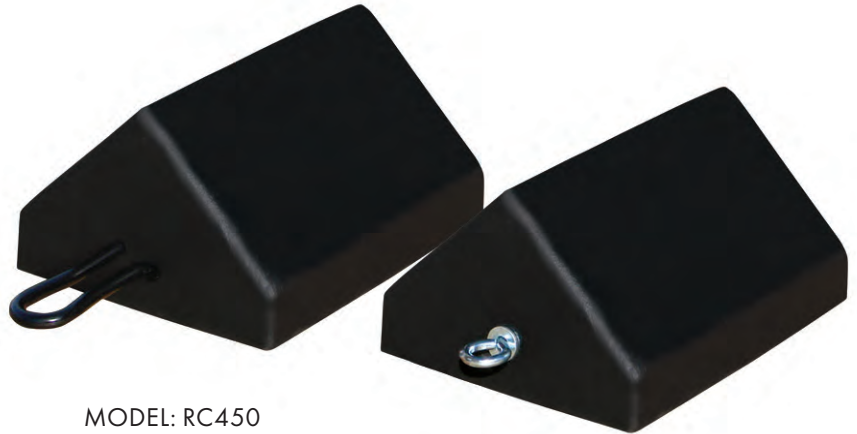
- **We are one of the largest manufacturers of wheel chocks in the world**
- **We manufacture the most popular wheel chocks in the highly-demanding mining industry**
- **Checkers™ wheel chocks are manufactured in the USA, in Broomfield, Colorado**
- **Polyurethane wheel chocks are resistant to extreme weather conditions, tears, abrasions, oils, and solvents**
- **Polyurethane chocks are extremely lightweight compared to excessive steel and aluminum counterparts**
- **Long-lasting product life span results in cost savings**
- **Checkers™ produces a wheel chock for virtually every type of tire-based vehicle**
- **Our wheel chocks are engineered to reduce damage to your vehicle's tires**
- **High-visibility safety colors used on most of our wheel chocks**
- **Checkers™ wheel chocks satisfy MSHA, OSHA, SAE, NFPA, and DOT compliance standards**
- **Recessed carrying handles included on most models**
- **Mounting brackets available for most models**

RC450 GENERAL-PURPOSE RUBBER

WHEEL CHOCKS are composed of durable rubber that makes them strong and safe in industrial applications. The RC models are resistant to damage from UV, moisture, salt, and oils. Their traction design grips the tire and road and will not cause tire or pavement damage. The chock design also allows either side to be positioned against tire. This series of chocks is built to suit a variety of applications in the construction, utility, and other commercial industries.

Material: UV-stabilized polyurethane

- Highly durable rubber construction
- Resistant to weather elements, UV, and oils/solvents
- Either side can be positioned against the tire
- Ideal for smaller vehicles and trailers
- Small design makes for easy storage



MODEL: RC450

MODEL: RC450-E

APPLICATIONS

- Civil Engineering and Construction
- Trailers
- Military Sites
- Infrastructure and Utilities Maintenance
- Transmission
- Recreation

SPECIFICATIONS



MODEL: RC450



MODEL: RC450-S



MODEL: RC450-CL



MODEL: RC450-GR

Model		Length	Width	Height	Weight
RC450	Bottom Void, Steel Loop	10 in. (25.4 cm)	8 in. (20.3 cm)	5.5 in. (14.0 cm)	7 lb. (3.2 kg)
RC450-S	Solid Bottom, Steel Loop	10 in. (25.4 cm)	8 in. (20.3 cm)	5.5 in. (14.0 cm)	10 lb. (4.5 kg)
RC450-CL	Bottom Void and Aluminum Ice Cleat, Steel Loop	10 in. (25.4 cm)	8 in. (20.3 cm)	5.5 in. (14.0 cm)	8.5 lb. (3.9 kg)
RC450-GR	Bottom Void and 14 ga. Steel Grate, Steel Loop	10 in. (25.4 cm)	8 in. (20.3 cm)	5.5 in. (14.0 cm)	9.2 lb. (4.2 kg)
RC450-E	Bottom Void, Eyebolt	10 in. (25.4 cm)	8 in. (20.3 cm)	5.5 in. (14.0 cm)	7 lb. (3.2 kg)



CHECKERS™

620 Compton St
Broomfield, CO 80020

PHONE: (800) 438-9336

FAX: (720) 890-4858

EMAIL: sales@checkers-safety.com

www.checkers-safety.com

Ver: 5/19

A PRODUCT OF:



Justrite Safety Group is the leading source of safety equipment for flammables and hazardous materials storage and handling, asset protection, environmental protection spill containment, absorbents, specialized chemical storage, cable management, safety showers, eye/face washes, matting, and vehicle safety equipment. Learn more at Justrite.com, Checkers-safety.com, and Notrax.com.